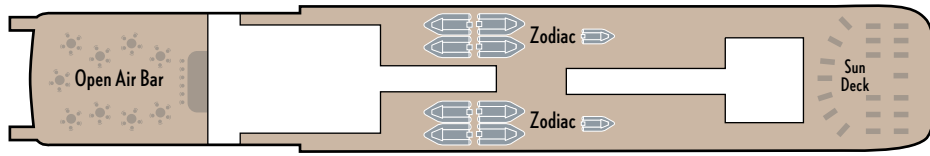
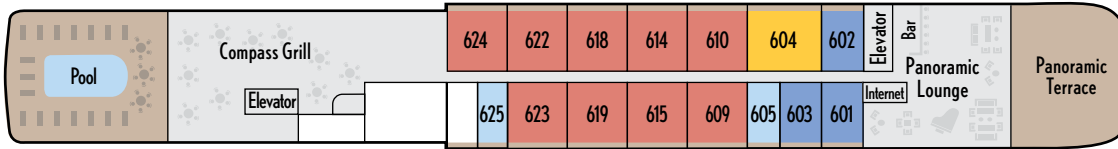


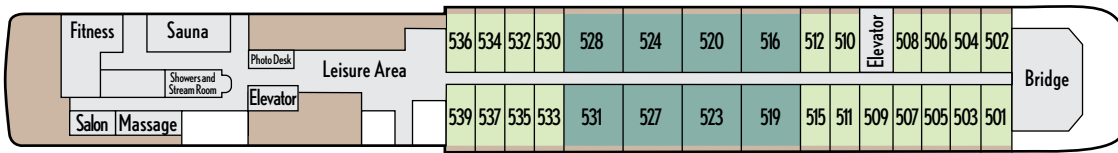
'L' Austral' Deck Plan



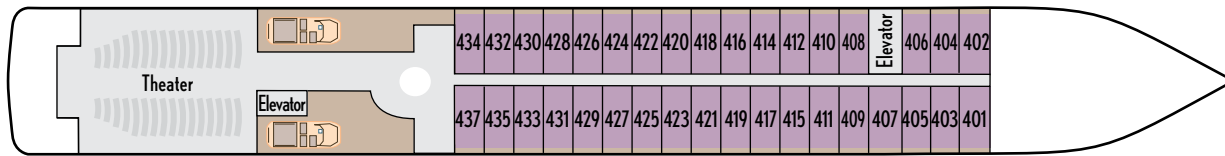
DECK 7



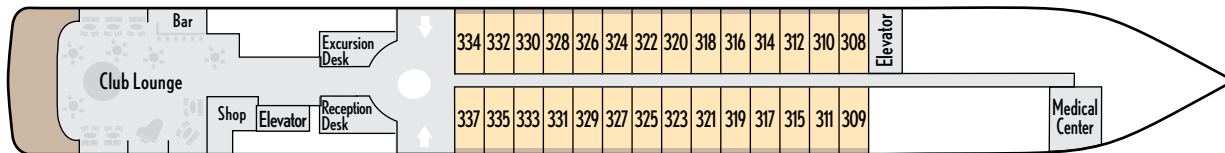
DECK 6



DECK 5



DECK 4



DECK 3



DECK 2

Cabin Categories

CABINS INCLUDING BUTLER SERVICE:

- **Category 8**
Owner's Balcony Suite
- **Category 7**
Prestige Two-Room Balcony Suite
- **Category 6**
Prestige Balcony Suite
- **Category 5**
Premier Two-Room Balcony Suite
- **Category 4**
Superior Balcony Stateroom
- **Category 3**
Premier Balcony Stateroom
- **Category 2**
Deluxe Balcony Stateroom
- **Category 1**
Classic Balcony Stateroom



The exclusive Owner's Suite



The comforts of a Stateroom

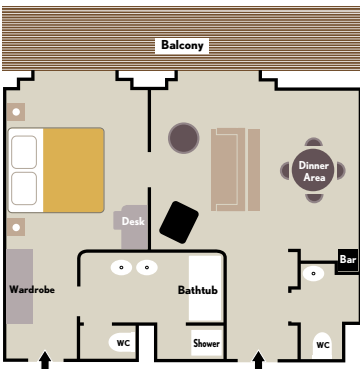


A stylish Two-Room Suite

Cabin Layout

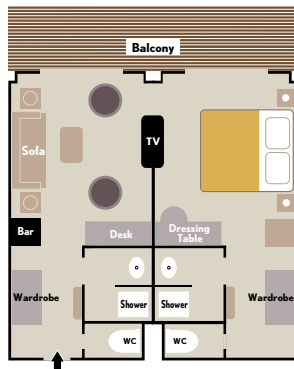
Owner's Balcony Suite (Category 8)

Cabin: 484 sq. ft. (45 sq. m.)
Balcony: 97 sq. ft. (9 sq. m.)



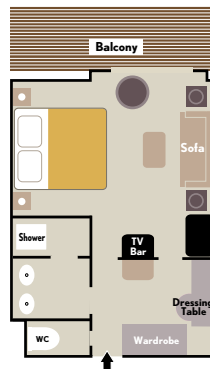
Premier and Prestige Two-Room Balcony Suites (Categories 5 and 7)

Cabin: 400 sq. ft. (37 sq. m.)
Balcony: 86 sq. ft. (8 sq. m.)



Prestige Balcony Suites (Category 6)

Cabin: 290 sq. ft. (27 sq. m.)
Balcony: 54 sq. ft. (5 sq. m.)



Balcony Staterooms (Categories 1-4)

Cabin: 200 sq. ft. (18.5 sq. m.)
Balcony: 43 sq. ft. (4 sq. m.)

