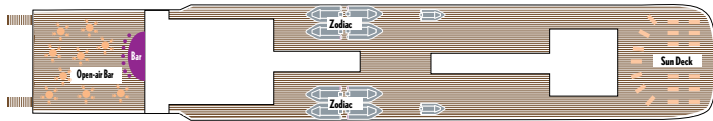
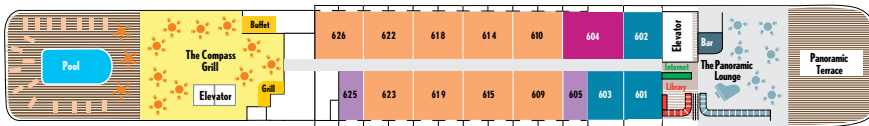


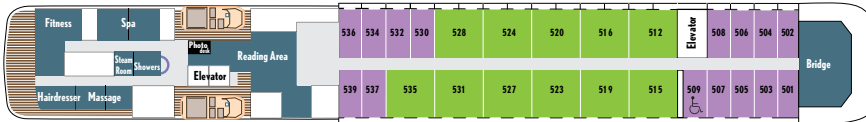
MV 'Le Boreal' Deck Plan



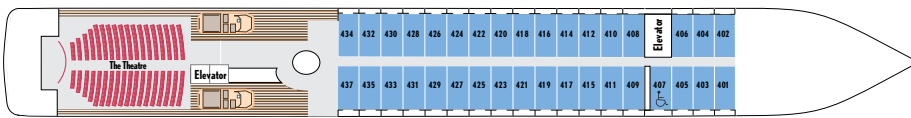
DECK 7



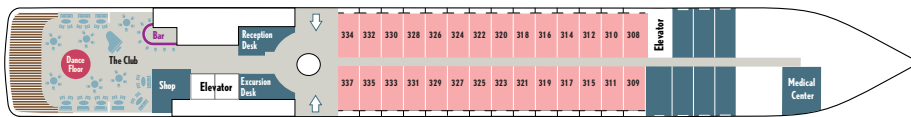
DECK 6



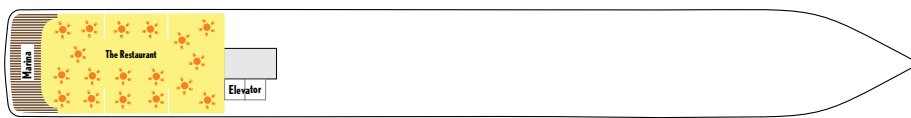
DECK 5



DECK 4



DECK 3



DECK 2

ROOM CATEGORIES

- Category 1: Standard Stateroom
- Category 2: Classic Stateroom
- Category 3: Superior Stateroom
- Category 4: Prestige Suite
- Category 5: Deluxe Two-Room Suite
- Category 6: Premium Two-Room Suite
- Category 7: Owner's Suite

SHIP'S DATA

- Overall length: 466 feet
- Beam: 59 feet
- Draft: 15.3 feet
- Average speed: 16 knots
- Ice class: 1C
- Passenger decks: 6
- Passenger capacity: Limited to 199 on Antarctic cruises
- Crew: 136
- Gross tonnage: 10.700 GRT
- Electric Motors: 2 x 2,3 MW
- Standards: USPHS – U.S. Coast Guards Rules
Comfort Class 1 – “Clean” Ship
Certification
- Flag: French

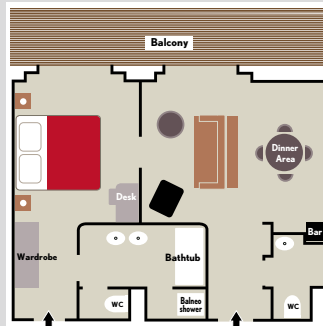
INFORMATION & AMENITIES

- Onboard language: English
- All outside staterooms and suites with private balcony
- Sun deck and multiple outer deck observation areas
- Outside heated pool
- Library with extensive selection of books and DVDs and reading areas
- Two restaurants offering exquisite dining experiences
- Panoramic lounge and panoramic terrace
- Three bars and a boutique
- Three passenger elevators
- Fitness center with state-of-the-art fitness equipment
- Hairdresser offering full-service hair styling, manicures and pedicures
- Spa, sauna and steam rooms
- 24-hour on-board medical facilities with certified doctor
- 24-hour room service and laundry services
- The Club lounge for live music and dancing
- Open bar (excluding premium wines, premium liquors and champagne)
- Theater seats more than 200 guests, with unobstructed views
- Wireless Internet access throughout the ship
- Electricity: 110/220 volts
- All gratuities on-board are included
- Dynamic positioning system
- “Clean” ship standard (meets or exceeds all IMO, EPA and IAATO operating standards)

OWNER'S SUITE

**484 square feet
with private balcony (97 square feet)**

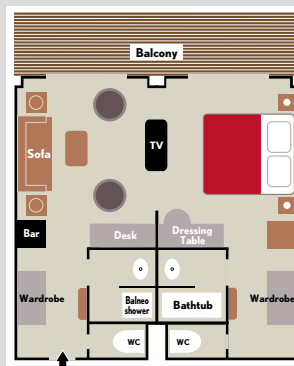
Outside • Twin beds or 1 king-size bed • Bathroom with bathtub, shower and toilet • Hair dryer • Wardrobe • Dressing table • Satellite flat-screen TV • DVD/CD player • iPod player • Mini bar • Writing desk with stationery • Private electronic safe • Direct-dial telephone • Designer range of French toiletries • Sitting area with sofa and table • Floor-to-ceiling patio doors leading to private balcony • Air-conditioned with individual stateroom thermostat • 110/220 volt outlets



PREMIUM & DELUXE TWO-ROOM SUITES

**398 square feet
with private balcony (86 square feet)**

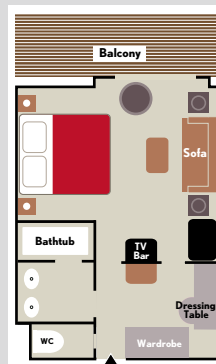
All outside • Twin beds or 1 king-size bed • Bathroom with bathtub • Separate bathroom with shower • Hair dryer • 2 separate toilets • 2 wardrobes • Dressing table • Satellite flat-screen TV • DVD/CD player • iPod player • Mini bar • Writing desk with stationery • Private electronic safe • Direct-dial telephone • Designer range of French toiletries • Sitting area with sofa (convertible to double-bed) and table • Floor-to-ceiling patio doors leading to private balcony • Air-conditioned with individual stateroom thermostat • 110/220 volt outlets



PRESTIGE SUITES

**290 square feet
with private balcony (54 square feet)**

All outside • Twin beds or 1 king-size bed • Bathroom with bathtub and a double-sink vanity • Hair dryer • Separate toilet • Wardrobe • Dressing table • Writing desk • Satellite flat-screen TV • DVD/CD player • iPod player • Mini bar • Private electronic safe • Direct-dial telephone • Designer range of French toiletries • Sitting area with sofa and table • Floor-to-ceiling patio doors leading to private balcony • Air-conditioned with individual stateroom thermostat • 110/220 volt outlets



STANDARD, CLASSIC & SUPERIOR STATEROOMS

**200 square feet
with private balcony (43 square feet)**

All outside • Twin beds or 1 king-size bed • Bathroom with shower • Separate toilet • Hair dryer • Wardrobe • Dressing table • Satellite flat-screen TV • Writing desk • DVD/CD player • iPod player • Mini bar • Private electronic safe • Direct-dial telephone • Designer range of French toiletries • Floor-to-ceiling patio door leading to private balcony • Air-conditioned with individual thermostat • 110/220 volt outlets

