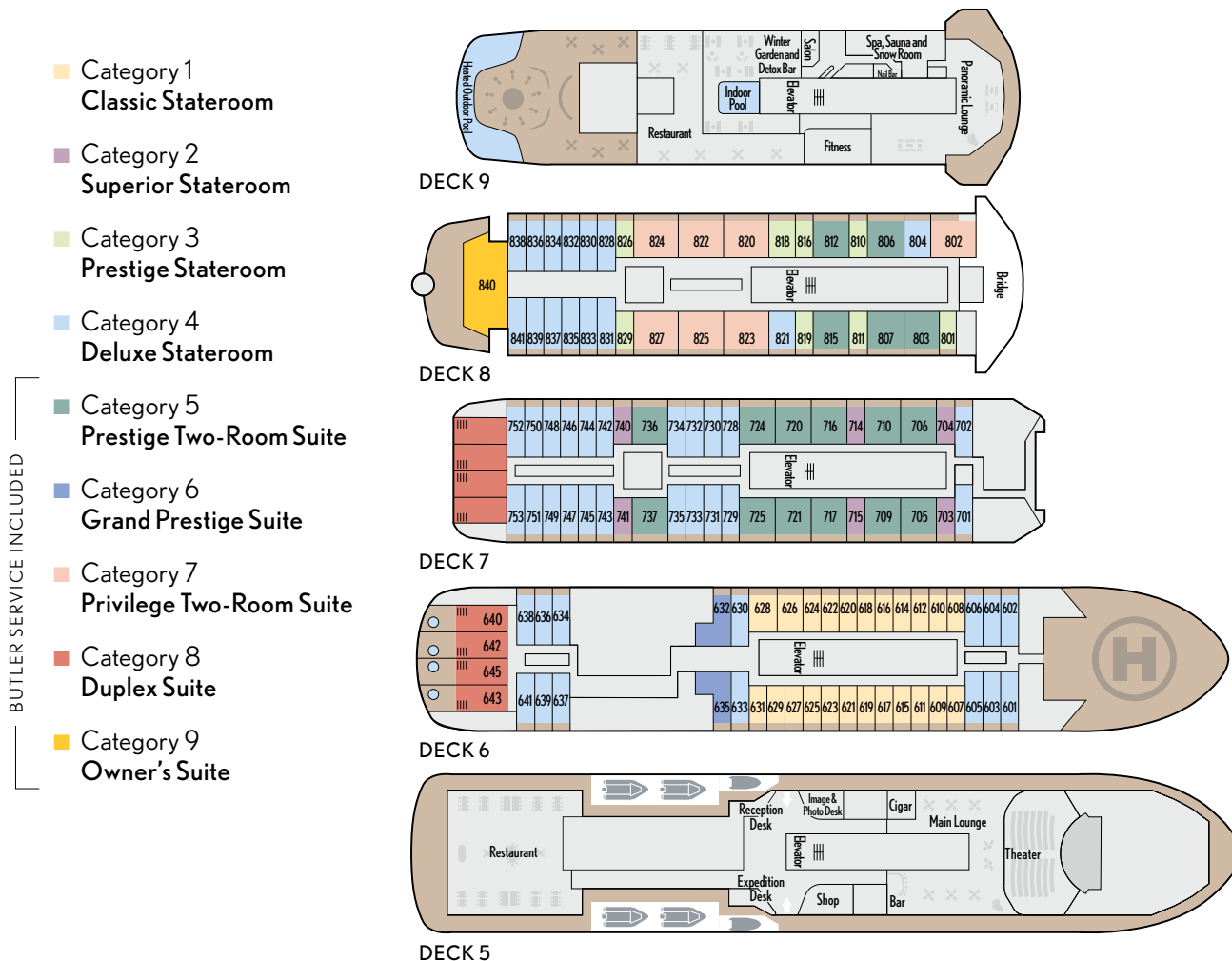


Le Commandant Charcot: Special Configuration for A&K Charters

Exclusively Featured on A&K Expeditions

- ▶ A guest capacity limited to 199 (from a maximum of 244)
- ▶ A&K's acclaimed Expedition Team (average of 20 experts)
- ▶ Intimate personnel-to-guest ratio of 1 to 1.3
- ▶ All English-speaking ship staff
- ▶ Complimentary butler service with every suite
- ▶ A&K's complimentary Traveller's Valet laundry service



Amenities

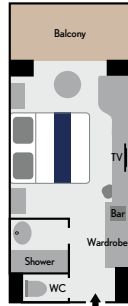
- ▶ Private balcony with every guest stateroom and suite
- ▶ Complimentary Wi-Fi (access and speed vary)
- ▶ Restaurant and Grill featuring indoor/outdoor seating
- ▶ Panoramic Terrace/Bar and Club Lounge/Bar with live music
- ▶ Open bar (excluding premium wines and spirits)
- ▶ Complimentary 24-hour room service
- ▶ Sun Deck and observation areas
- ▶ Heated outdoor pool
- ▶ Full-service Spa with massage rooms, sauna and steam room
- ▶ Panoramic Fitness Center with Kinesis® wall
- ▶ Theater, Library and Boutique
- ▶ Three elevators
- ▶ 24-hour Medical Center with certified doctor and nurse

Ship Details

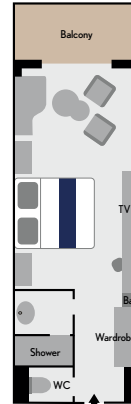
- ▶ Launched: 2020
- ▶ Overall length: 492 feet
- ▶ Average speed: 15 knots
- ▶ Ice class: Polar Class 2
- ▶ Technology: Advanced navigation, stabilization, propulsion, and emissions and wastewater management systems
- ▶ Standards: USPHS – U.S. Coast Guard's Rules Comfort Class 1 Clean-Ship Certification (meets or exceeds all IMO, EPA, IAATO and AECO operating standards)
- ▶ Flag: French

All staterooms and suites feature a private balcony, on-demand TV, minibar, Nespresso machine, plush robes and slippers, and luxury bath products.

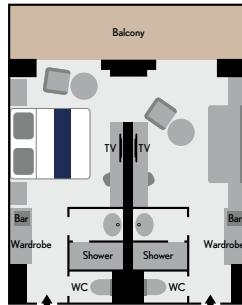
Every suite includes butler service, welcome Champagne, nightly canapés and packing/unpacking on request.



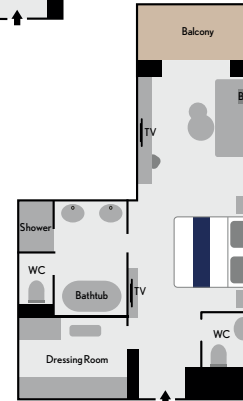
**Categories 1-3
Staterooms**
Cabin: 215 sq. ft. (20 sq. m.)
Balcony: 53 sq. ft. (5 sq. m.)



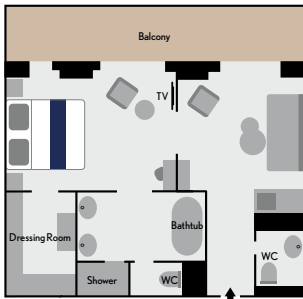
**Category 4
Deluxe Stateroom**
Cabin: 301 sq. ft. (28 sq. m.)
Balcony: 53 sq. ft. (5 sq. m.)



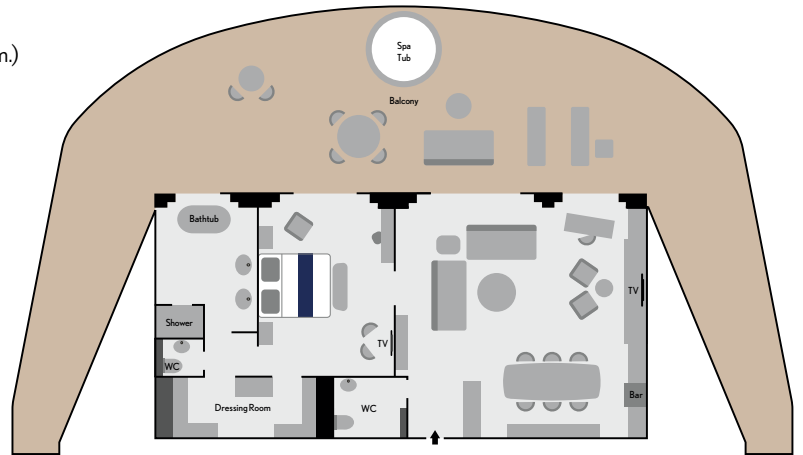
**Category 5
Prestige Two-Room Suite**
Cabin: 430 sq. ft. (40 sq. m.)
Balcony: 107 sq. ft. (10 sq. m.)



**Category 6
Grand Prestige Suite**
Cabin: 452 sq. ft. (42 sq. m.)
Balcony: 54 sq. ft. (5 sq. m.)



**Category 7
Privilege Two-Room Suite**
Cabin: 516 sq. ft. (48 sq. m.)
Balcony: 134.5 sq. ft. (12.5 sq. m.)



**Category 8
Duplex Suite**
Cabin: 1,011 sq. ft. (94 sq. m.)
Balcony: 279 sq. ft. (26 sq. m.)



**Category 9
Owner's Suite**
Cabin: 1,237 sq. ft. (115 sq. m.)
Balcony: 2,002 sq. ft. (186 sq. m.)

For detailed pricing and availability, visit abercrombiekent.com.

Prices are per person, double occupancy.